

# How do I read my smart meter?

There are two brands of electric smart meters. Both meters have easy-to-read digital displays, instead of dials, and automatically cycles through 3 displays of numbers. The kilowatt-hour (kWh) usage is represented by the 5-digit number on the #04 or #004 screen (depending on the meter's manufacturer) represents the amount in kilowatt hours (kWh) of energy you have used to date since the installation of the meter. To calculate your total kWh energy use in a given time period, simply subtract an earlier reading from your current reading.

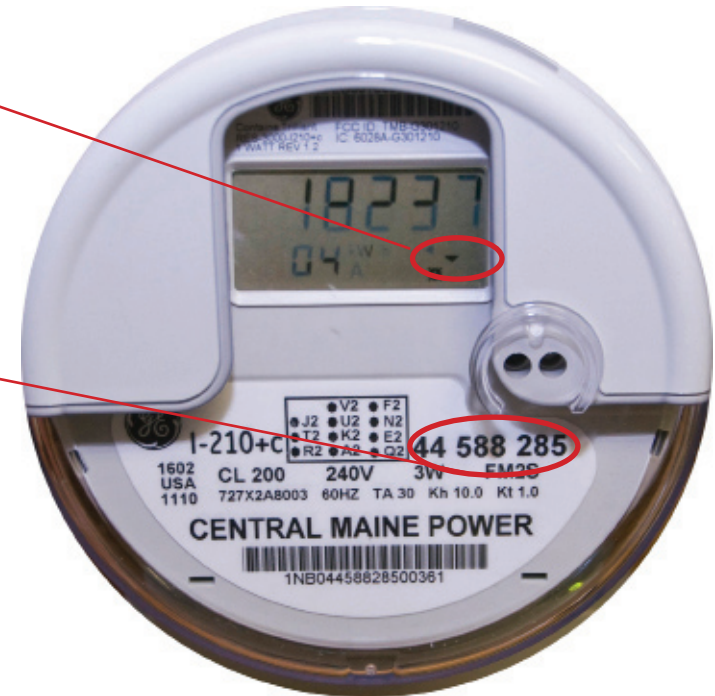
The word test comes up every time the 8s (segment check) appears. There is nothing wrong with the display. It is simply indicating that all displays are working.

In the future, your new meters and the information they provide can help you make smart choices to save energy and money. Beginning in the Spring 2012, you'll be able to monitor your energy use daily via a secured Web site.

## Landis + Gyr Meter



## G&E Meter



Simulated disk

Meter #