

Section 31 Transmission Line Rebuild: Topsham and Brunswick

Project Overview

Central Maine Power (CMP) is investing in transmission line upgrades to strengthen the electric grid and continue providing our customers with safe, reliable service. This is especially important as Maine experiences stronger, more frequent storms.

As part of these improvements and to meet the growing energy needs of the communities we serve, we will rebuild our Section 31 transmission line in Topsham and Brunswick beginning in Spring 2026. This line provides electricity to 8,000 customers in Brunswick, Topsham, and Harpswell. Its five-mile route travels from a substation near Topsham Fair Mall to the Brunswick West Side Substation on Barrows Street.

Project Need

Section 31 is a 50–60-year-old transmission line that in recent years has become more vulnerable to outages due to age and increased storm activity. We will build a new, modernized line to improve reliability, expand capacity to meet growing electricity demand, and support clean energy technologies such as electric vehicles and heat pumps.

Project Scope

We'll build the new transmission line while keeping the old one in place and energized to avoid any service interruption; there will be no outages as a result of this work. The new line will use slightly taller steel poles and a covered wire that helps prevent tree-related outages. Once the new line is up and running, we'll safely remove the old poles and wires.

Estimated Timetable

- **Construction Start:** Spring 2026
- **Completion:** End of 2026

New Structure Rendering



Galvanized steel poles will replace wood ones, as shown above.

Benefits to Customers

- Improved reliability to meet our customers' needs.
- Upgraded structures to enhance resiliency, especially during storms.

Permits

CMP will obtain all necessary permits and approvals from the Maine Department of Transportation, Maine Department of Environmental Protection, U.S. Army Corps of Engineers, and the Town of Brunswick.

**FOR MORE
INFORMATION**

Project Information Line:
1.888.267.0831
(Refer to Section 31 in your message)

Email: outreach@cmpco.com

Web: cmpco.com/Section31



Access

CMP crews will be accessing the transmission line corridor via roads where CMP has access rights or legal agreements with property owners or towns. CMP will contact some adjacent landowners to discuss access rights.

CMP's Easement

CMP has a perpetual easement of 100 feet that has been in place since the 1950s. The current Section 31 transmission line is in the middle of the easement. As part of the upgrade, a new line will be installed next to the existing line within the established 100-foot boundaries. The width and location of the existing corridor will remain the same.

Protecting Sensitive Areas

Our crews will lay wood mats in environmentally sensitive areas to spread out the weight of construction vehicles and protect the land underneath.

Trees and Vegetation

Tree removals reduce outage risks. In summer-early winter 2025, CMP's Vegetation Management crews trimmed or removed trees and vegetation as part of their regular corridor maintenance cycle. Additional trees that are identified as posing a hazard or danger to the new line may need to be trimmed or removed.

Schools, Paths, and Recreational Activities

We're working with the municipalities, police department, Brunswick School Department, and other community partners to be mindful of local events, school and sports schedules, bus stops, and safety on walking paths. To keep you informed every step of the way, we'll coordinate with local officials to send updates, post signs, and use safety fencing where needed. We'll do our best to minimize disruptions for everyone.

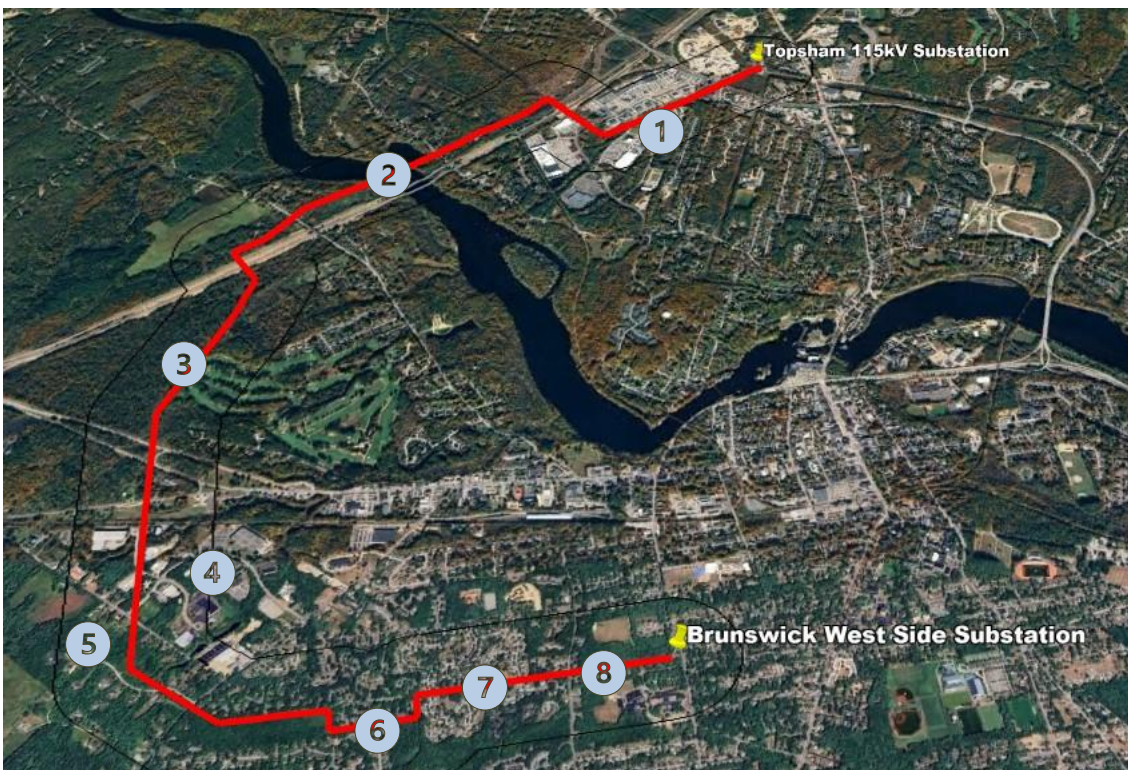
Construction Zone Safety

Safety is always our top priority. Please follow construction signs regarding construction zones, path closures, traffic pattern changes, or parking lot closures.

Work Hours and Noise

Most work will occur during daylight hours in accordance with town ordinances. Some work, particularly in the Topsham Fair Mall area, across the interstate, and the Androscoggin River, will occur in the evening. Weekend work may be required. All work is weather dependent.

Section 31 Transmission Line Corridor



Areas of Interest

- 1) Topsham Fair Mall
- 2) Androscoggin River and I-295 (twice)
- 3) Brunswick Golf Course
- 4) Bibber Parkway, Industrial Way
- 5) Greenwood Road, Rugosa Way, and Church Road
- 6) Willow Grove
- 7) Columbia Avenue Practice Fields
- 8) Emanuel to Barrows, including Crimmins Field and Brunswick Jr. High