

## Factory Island Substation Upgrades

### Saco, ME

2025-2026

### Project Overview

As part of our commitment to provide safe, resilient service to our customers, Central Maine Power (CMP) is preparing to upgrade the substation located at 109 Main Street on Factory Island in Saco. CMP is working with communities and reaching out to neighbors to ensure that all improvements are performed safely and with minimal disruptions to their daily lives, the community, and the environment.

### Project Scope

The project scope includes replacement of two existing transformers with upgraded transformers that will increase system capacity and redundancy, new circuit breakers, updated smart communications devices, and a new battery bank to improve reliability and resiliency.

### Project Need

The purpose of this project is to upgrade the existing substation due to its age and potential inability to meet load requirements and the growing needs of the area. The new substation will improve the reliability of service for over 7,600 area customers and provide increased capacity to support future growth.

### Benefits to Customers

- Increased capacity will help meet the electricity needs of customers.
- Improved reliability.
- Support for future growth.

## FOR MORE INFORMATION

**Project Information Line:** 1.888.267.0831

**Email:** [outreach@cmpco.com](mailto:outreach@cmpco.com)

Please refer to Factory Island in your message.

### Project Facts

- **Municipality:** Saco
- **County:** York
- **Permitting Required:** City of Saco Planning Board Review, Saco River Corridor Commission, ME Dept. of Environmental Protection

### Estimated Timetable

- **Construction:** Summer 2025
- **Estimated Completion:** Fall 2026

### Work Hours and Impacts

Work activity periods will comply with city ordinances. Work will be conducted during daylight hours, utilizing existing access points, and will entail the use of heavy machinery. As a result, nearby property owners may experience:

- Traffic disruptions, including the use of flaggers and temporary lane closures.
- Typical construction noise, including backup beeping, should be expected. Abutters may hear the use of heavy equipment vehicles (bucket trucks, drilling equipment).

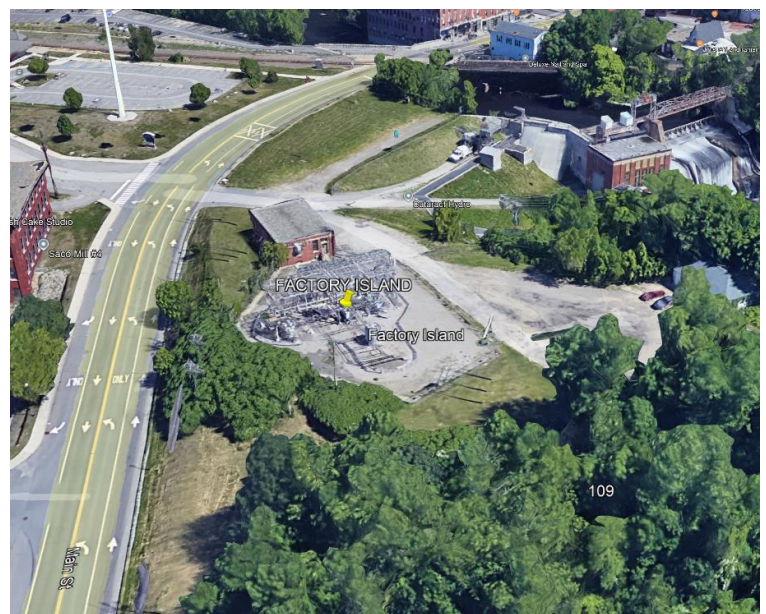


Image shows the location of the Factory Island Substation at 109 Main Street, Factory Island, Saco.