

Pine Tree Pricing

Businesses that are participating in Maine's Pine Tree Zone program are eligible for reduced prices on electric delivery service from CMP.

Pine Tree Zone Pricing works for Maine

This special pricing plan is designed to work with other benefits provided by the state and participating municipalities to create and retain high quality jobs for Maine.

To Qualify

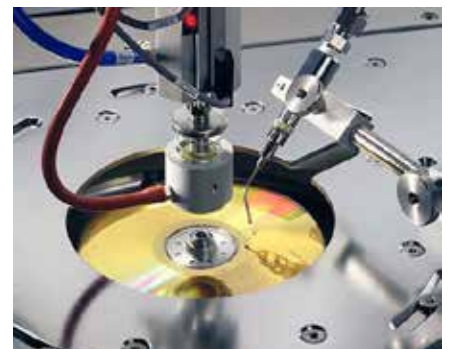
Qualification is easy! Simply present CMP with a copy of your Pine Tree Zone certification, provided by the Maine Department of Economic and Community Development.

Eligibility

This pricing is available to expanding businesses participating in Maine's Pine Tree Development Zone program. Eligibility is limited to businesses engaged in:

- Manufacturing
- Financial Services (banking, insurance, mutual fund administration)
- Advanced Technologies for Forestry and Agriculture
- Aquaculture and Marine Technology
- Biotechnology
- Composite Materials
- Environmental Technology
- Information Technology
- Precision Manufacturing

CMP has been powering Maine for more than 100 years. Whether you need to run heavy machinery or computers, you can plug in with confidence.



Pine Tree Pricing

The Pine Tree Zone Price is a credit provided at year-end, based upon incremental electricity consumption above the prior twelve-month baseline.

Manufacturers:

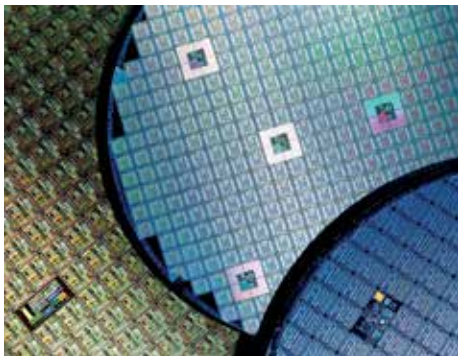
Year	Credit per incremental kWh*
1	1.5¢
2	1.0¢
3	0.5¢
4	0.5¢

Non-manufacturers:

Year	Credit of incremental power use*
1	5.0%
2	2.5%

We will enter into either a two or four-year contract with you, depending upon the credit for which you qualify.

* Subject to maximum allowable discount.



We are committed to business growth

CMP is a leader in Maine's economic development. We support business growth through our energy programs and partnerships with other state and local organizations.

We are committed to stability in electric delivery prices. We have a smart and experienced team of business development experts ready to assist with everything from feasibility studies — to consulting on and designing electric systems — to finding creative ways to help fund relocations and expansions. Whatever your need or interest, please give CMP a call.

Maine's a great place to plug in your business

Central Maine Power Company operates an electricity delivery system with over 20,000 miles of lines and more than 150 substations. We serve over 580,000 customers — approximately 80% of Maine's overall population in central and southern Maine. Of those, 60,000 accounts are commercial and industrial users that count on us to power their business every day.

For more information regarding the Pine Tree Pricing, contact Steve Daniels, Marketing and Economic Developer, at **207-453-3365**, or by e-mail at **steve.daniels@cmpco.com**



Steve Daniels,
Marketing and Economic Development